

## T echnical Data (at 110V/50Hz)

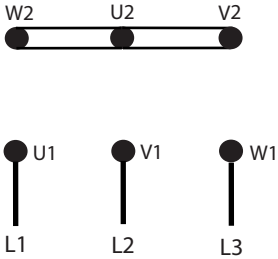
Model	Power (KW)	Current (A)	Speed (r/min)	Eff. (%)	Power Factor (Cosφ)	Rate Torque (N.M)	T <sub>st</sub> /T <sub>n</sub> (Times)	T <sub>max</sub> /T <sub>n</sub> (Times)	Starting Current (A)	Run Capacitor (μF/V)	Start Capacitor (μF/V)	Noise dB (A)	W.T (Kg)
		110V											
TCC 631-2	0.18	2.89	2710	63	0.9	0.63	1.8	1.6	16	30μF/250V	100μF/125V	70	4.2
TCC 632-2	0.25	3.95	2710	64	0.9	0.88	1.8	1.6	20	40μF/250V	100μF/125V	73	4.7
TCC 711-2	0.37	5.4	2780	67	0.93	1.27	2.0	1.8	30	40μF/250V	200μF/125V	75	5.3
TCC 712-2	0.55	7.68	2790	70	0.93	1.88	2.0	1.8	40	60μF/250V	300μF/125V	76	7.4
TCC 801-2	0.75	9.97	2800	72	0.95	2.56	2.5	1.8	60	80μF/250V	400μF/125V	76	9.5
TCC 802-2	1.1	14.04	2810	75	0.95	3.74	2.5	1.8	80	100μF/250V	600μF/125V	79	11.2
TCC 90S-2	1.5	18.89	2810	76	0.95	5.10	2.5	1.8	110	140μF/250V	800μF/125V	84	14
TCC 90L-2	2.2	27.34	2810	77	0.95	7.48	2.5	1.8	150	160μF/250V	1000μF/125V	84	17
TCC 100L-2	3	36.34	2830	79	0.95	10.13	2.5	1.7	220	180μF/250V	1400μF/125V	88	25
TCC 631-4	0.12	2.2	1350	55	0.9	0.86	2.5	1.6	12	30μF/250V	100μF/125V	64	4.1
TCC 632-4	0.18	3.25	1350	56	0.9	1.27	1.8	1.6	17	40μF/250V	100μF/125V	64	4.4
TCC 711-4	0.25	4.21	1380	60	0.9	1.73	1.8	1.7	20	40μF/250V	150μF/125V	66	5.9
TCC 712-4	0.37	5.93	1380	63	0.9	2.56	2.0	1.7	30	40μF/250V	200μF/125V	68	6.9
TCC 801-4	0.55	8.42	1400	66	0.9	3.75	2.0	1.8	40	70μF/250V	300μF/125V	71	9.6
TCC 802-4	0.75	10.98	1410	69	0.9	5.08	2.5	1.8	60	90μF/250V	400μF/125V	71	10.8
TCC 90S-4	1.1	14.73	1410	73	0.93	7.45	2.5	1.8	80	120μF/250V	600μF/125V	74	13.5
TCC 90L-4	1.5	19.81	1400	74	0.93	10.24	2.5	1.8	110	140μF/250V	800μF/125V	79	16.5
TCC 100L-4	2.2	28.3	1430	76	0.93	14.70	2.5	1.8	150	170μF/250V	1300μF/125V	79	24
TCC 100L2-4	3	38.09	1440	77	0.93	19.91	2.5	1.8	220	200μF/250V	1600μF/125V	83	30

## T echnical Data (at 230V/50Hz)

Model	Power (KW)	Current (A)	Speed (r/min)	Eff. (%)	Power Factor (Cosφ)	Rate Torque (N.M)	T <sub>st</sub> /T <sub>n</sub> (Times)	T <sub>max</sub> /T <sub>n</sub> (Times)	Starting Current (A)	Run Capacitor (μF/V)	Start Capacitor (μF/V)	Noise dB (A)	W.T (Kg)
		230V											
TCC 631-2	0.18	1.38	2710	63	0.9	0.63	2.5	1.6	8	10μF/450V	30μF/250V	70	3.9
TCC 632-2	0.25	1.89	2710	64	0.9	0.88	2.5	1.6	10	12μF/450V	40μF/250V	73	4.4
TCC 711-2	0.37	2.66	2780	65	0.93	1.27	2.5	1.8	15	12μF/450V	75μF/250V	75	6.1
TCC 712-2	0.55	3.78	2790	68	0.93	1.88	2.5	1.8	20	16μF/450V	100μF/250V	76	7
TCC 801-2	0.75	4.87	2800	72	0.93	2.56	2.5	1.8	30	20μF/450V	100μF/250V	76	9
TCC 802-2	1.1	7.04	2810	73	0.93	3.74	2.5	1.8	40	30μF/450V	150μF/250V	79	10.3
TCC 90S-2	1.5	9.48	2810	74	0.93	5.10	2.5	1.8	55	40μF/450V	200μF/300V	84	16.3
TCC 90L-2	2.2	13.57	2810	75	0.94	7.48	2.5	1.8	75	50μF/450V	250μF/300V	84	16.7
TCC 100L-2	3.0	17.83	2830	77	0.95	10.13	2.5	1.7	110	60μF/450V	400μF/300V	88	25
TCC 112M1-2	3.7	21.48	2850	78	0.96	12.40	2.5	1.7	140	60μF/450V	600μF/300V	90	33
TCC 112M2-2	4.0	22.18	2850	80	0.98	13.41	2.5	1.7	150	60μF/450V	600μF/300V	90	34.2
TCC 631-4	0.12	1.05	1350	55	0.9	0.85	2.5	1.6	6	10μF/450V	30μF/250V	64	4.1
TCC 632-4	0.18	1.55	1350	56	0.9	1.27	2.5	1.6	8.5	12μF/450V	40μF/250V	64	4.5
TCC 711-4	0.25	2.01	1380	60	0.9	1.73	2.5	1.7	10	12μF/450V	50μF/250V	66	5.9
TCC 712-4	0.37	2.84	1380	63	0.9	2.56	2.5	1.7	15	16μF/450V	75μF/250V	68	6.9
TCC 801-4	0.55	4.03	1400	66	0.9	3.75	2.5	1.8	20	20μF/450V	100μF/250V	71	9.6
TCC 802-4	0.75	5.25	1410	69	0.9	5.08	2.5	1.8	30	25μF/450V	100μF/250V	71	10.9
TCC 90S-4	1.1	7.24	1410	71	0.93	7.45	2.5	1.8	40	35μF/450V	150μF/250V	74	13.8
TCC 90L-4	1.5	9.61	1400	73	0.93	10.24	2.5	1.8	55	40μF/450V	200μF/300V	79	16.7
TCC 100L1-4	2.2	13.90	1430	74	0.93	14.70	2.5	1.8	75	50μF/450V	300μF/300V	79	22.8
TCC 100L2-4	3	18.70	1440	75	0.93	19.91	2.5	1.8	110	60μF/450V	500μF/300V	83	28.7
TCC 112M1-4	3.7	21.99	1440	77	0.95	24.55	2.5	1.7	140	60μF/450V	600μF/300V	86	31
TCC 112M2-4	4.0	22.41	1440	80	0.97	26.54	2.5	1.7	150	60μF/450V	600μF/300V	86	32.8

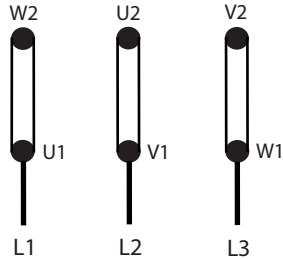
**MS Three Phase Motors**

Star Connection 



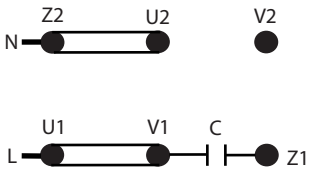
Connect links as shown below


Delta Connection 

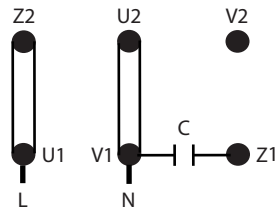


**MY Single Phase - Perm Cap**

Clockwise Rotation 

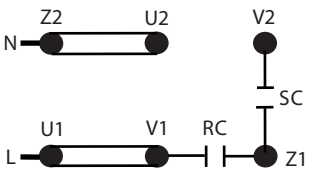


Anti Clockwise Rotation 



**ML Single Phase - Cap Start / Cap Run**

Clockwise Rotation 



Anti Clockwise Rotation 

